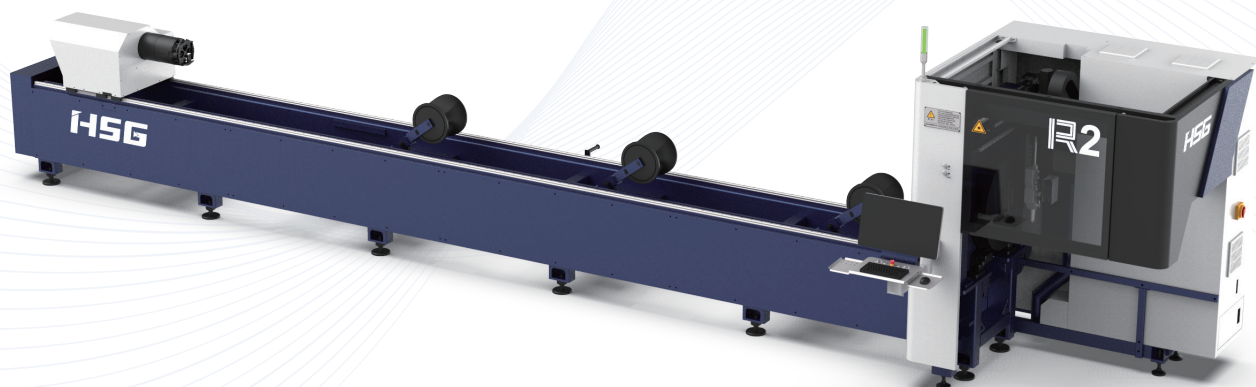




Cutting | Bending | Welding | Automation



R2

❑ Double-chuck Universal Tube Laser Cutting Machine ❑

Company Culture



MISSION

Intelligent manufacturing changes future



VALUES

Customer-focused and employee-based



VISION

Become a respectable enterprise in the global metal forming equipment field

Company Profile



19

Global Branches



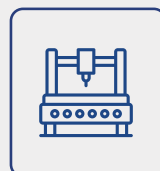
100+

Countries Covered



4

Manufacturing Bases



8,000+

Annual Capability



30+

Global Service Centers



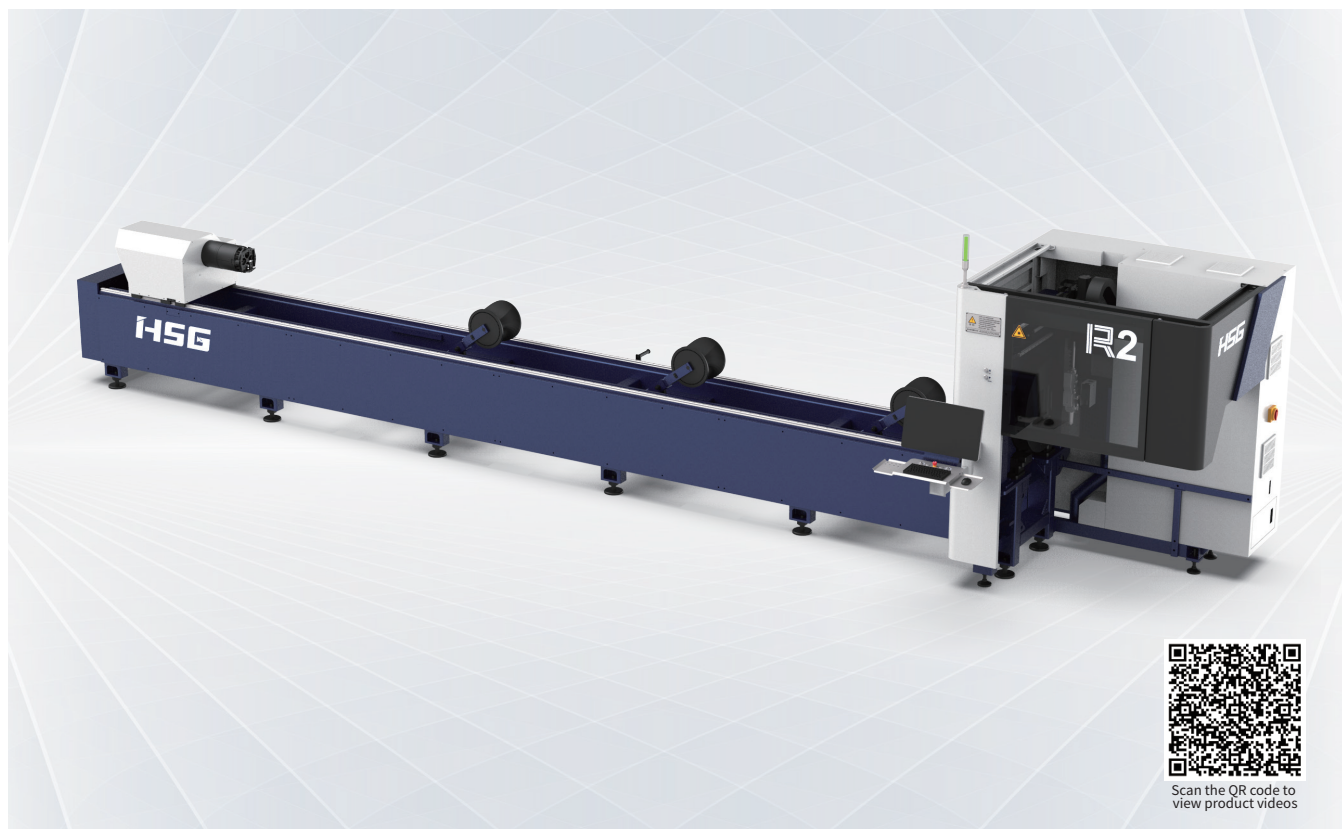
135,000m²

Occupied Area



R2 1500-6000W

Double-chuck Universal Tube Laser Cutting Machine



Technical Parameters

Technical Parameter	R2
Power	1500-6000W
No-load Speed	120m/min
Rotating Speed of Chucks	100r/min
Acceleration	1G
X/Y-axis Positioning Accuracy	±0.05mm/m
X/Y-axis Repositioning Accuracy	±0.03mm
*Tailing Length	Tailings in Single Chuck Clamping Model≥85mm Tailings in Double-chuck Clamping Model≥225mm
Cutting Capacity	Round tubeΦ8 - Φ240mm Square tube□8*8 - □240*240mm Side Length: 80-240mm
Weight of Single Tube	300kg
Dimensions-Single machine (L*W*H)	About 10110*2530*2215mm
The range of pipe material	1000-6500mm

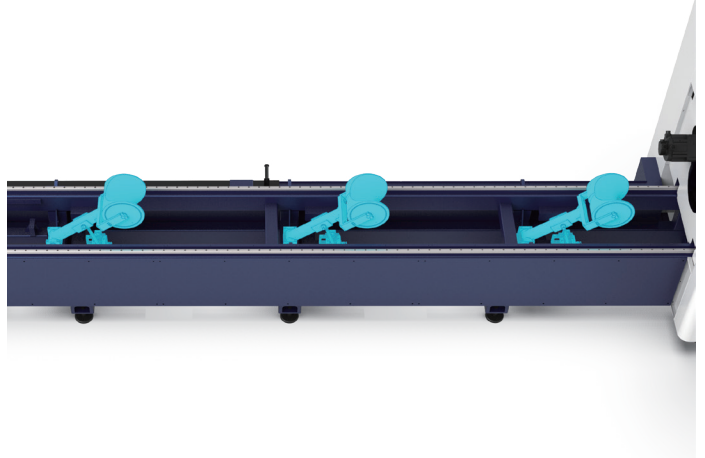
*Suggested Tube Length in Single Chuck Clamping≤500mm, Weight of Tube≤5kg.

* Machine appearance, technical parameters, function description, data comparison shown in this page are from HSG in-house laboratory.
All testing results and experimental data shall be subject to real machine.



Precise Cutting with Pneumatic Support

- Three pneumatic concave wheel supports are the standard equipment of R2 series, satisfying your support demands for most tube types.
- R2 series can be equipped with servo follow-up support optionally for higher precision.



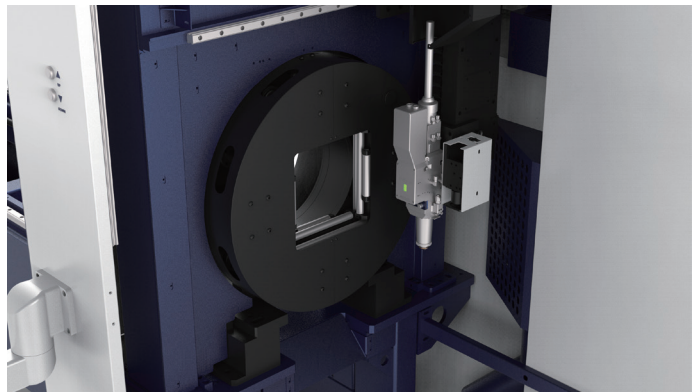
Fabulous Dynamics Assist in Higher Productivity

- The chuck operating speed of R2 series can achieve 120m/min and the chuck rotation speed can achieve 100r/min with 1.0G acceleration, which play an important role in productivity improvement.



Standard Configuration of Rectangular-circle Chucks, Supporting Various Tubes

- Equipped with simple rectangular-circle chucks, R2 series can achieve the weight capacity of 300Kg, supporting various types of tubes.
 - Round Tube: $\phi 8$ - $\phi 240$
 - Square Tube: $\square 8$ - $\square 240$
 - 15# H Steel
 - Angle Steel 20#
 - Channel Steel 20#
- (Note: R2 series can be equipped with professional rectangular-circle chucks for stronger sealing and protection abilities)



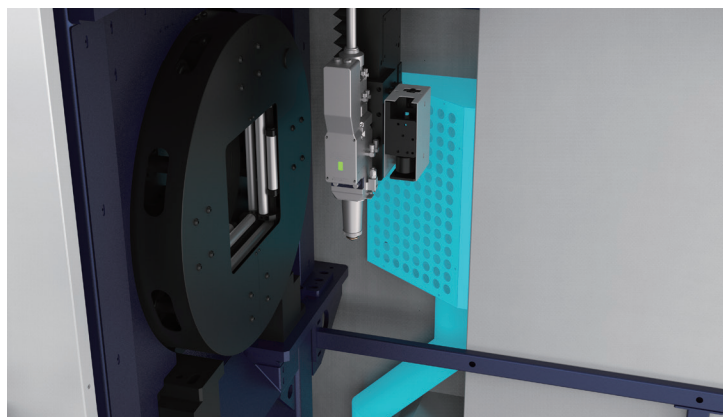


HSG-X Bus Control System

- HSG-X control system is bus-based and developed by HSG Laser. With intelligent and easy-to-operate service, it can offer users effective solutions to address problems of difficult operation, low efficiency and high costs.

Eco-friendly Cutting

- The cutting area is equipped with air extraction pipes, making the processing environment clean and environmental protection.

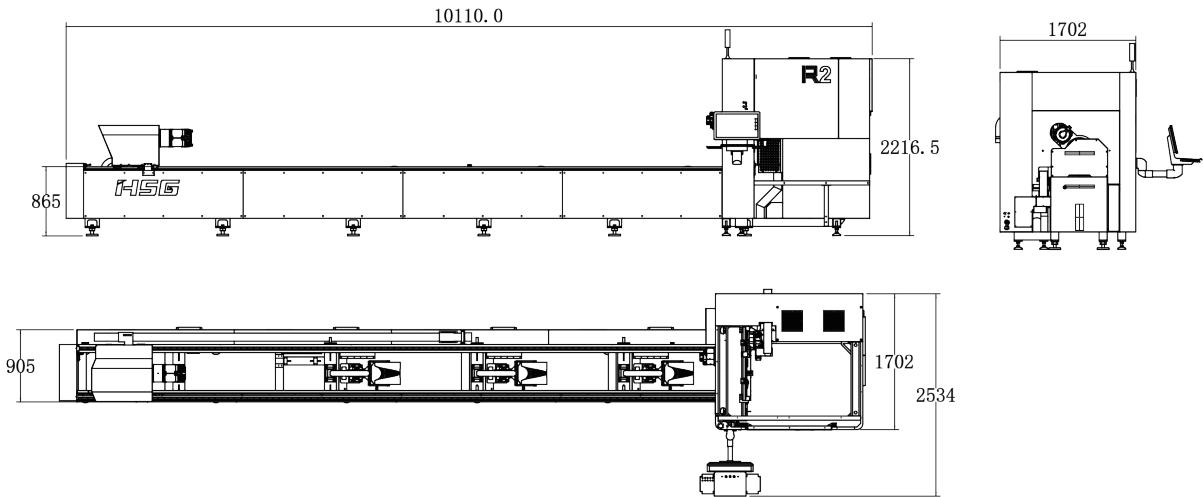


More Stable and Precise for Blanking Rack (Optional)

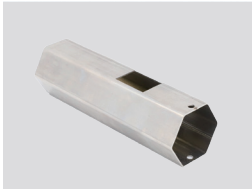
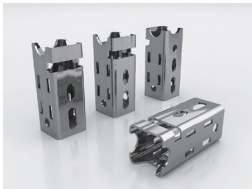
- R2 series can be added with 3m blanking rack, for more stable and precise cutting of long tube cutting especially.

Machine Foundation

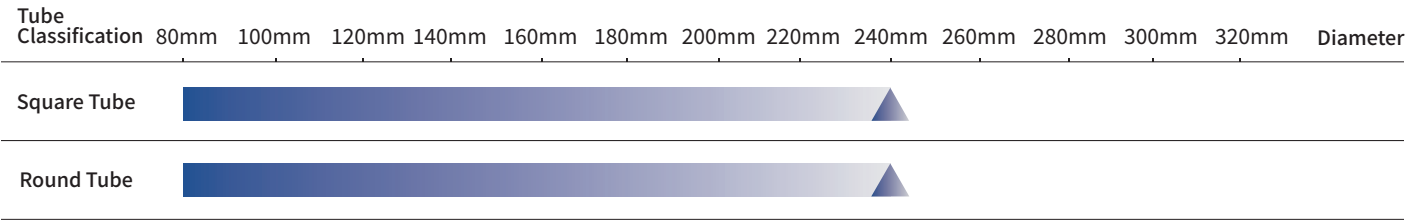
*The marked size has about 10mm error



Cutting Samples



Cutting Capacity



The actual machines shall prevail and above data & pictures are only for reference.



Intelligent Manufacturing Changes Future



As a global enterprise, HSG sticks to providing professional and convenient service support to customers at home and board



Professional Training

Multiple technical training service and free operation training for customers and dealers in time



Efficient Support

Humanistic service model, online services and 7*24 hotline to offer solutions and assistance



Optimized Transport

Multi-channel transport solutions and professional transport solution team will provide various transport cases for to satisfy the demand of customers and save transports fees



Sufficient Accessories

Highly efficient accessories delivery service, multiple network inventory jointly responds to accessories demand to shorten customer's waiting times and accelerate production



Careful Services

Domestic door-to-door service and free proofing, global 100+dealers provide efficient and convenient services



Intelligent Manufacturing Changes Future



Website



Facebook



Youtube

Headquarters Add.: No. 4, Anye Road, Shunjiang Community Industrial Park,
Beijiao Town, Shunde District, Foshan, Guangdong, China
Website: www.hsglaser.com
Email: info@hsglaser.com
Tel: +86 757-66833906